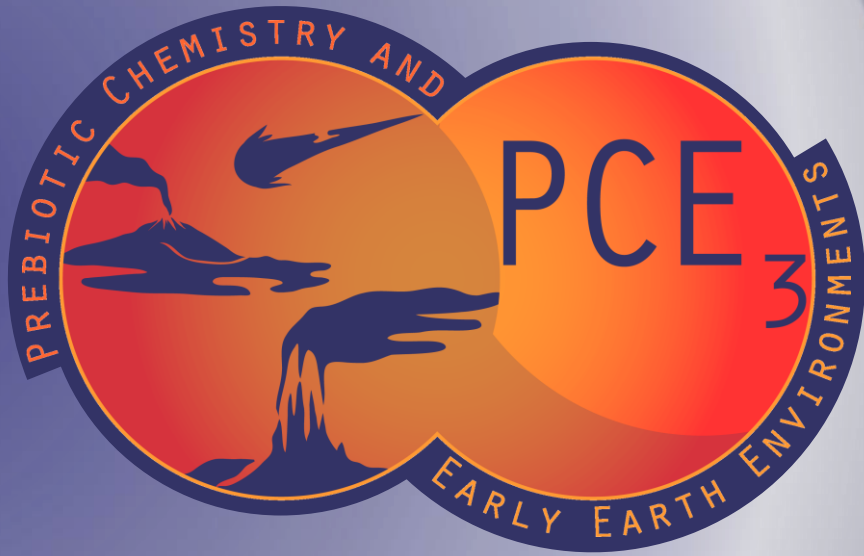


Theme:
Ancient Marine Environments



PCE₃ Seminar Series

Thurs, Aug 31st - 5 p.m. EDT

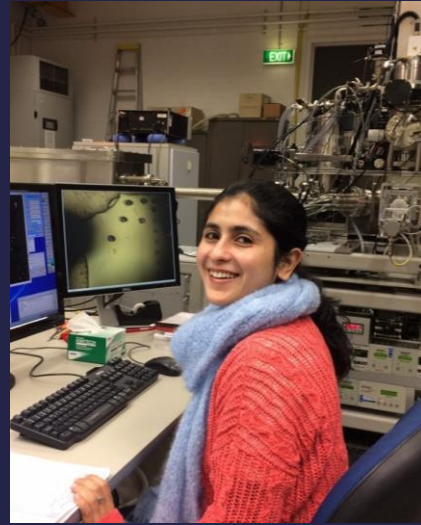
2 p.m. PDT

More information & registration:

prebioticchem.org/seminars



@PCE3_Sci



Indrani Mukherjee

Lecturer

*University of New South Wales
School of Biological, Earth and
Environmental Sciences*

"Fingerprints of Ancient Life on
Earth"

Indrani Mukherjee is a lecturer and researcher in Earth Sciences at the University of New South Wales. Originally, she is from India where she earned her BSc Honours and Masters in Geology at the University of Delhi. She completed her PhD at the University of Tasmania in 2018, where she worked as a lecturer and postdoctoral researcher in Earth Sciences until 2022. She then went on to pursue the Roger E. Deane Fellowship at the University of Toronto. Her research focuses on ancient marine environments, and questions key concepts, and explores links between early Earth evolution, the origin of complex life and formation of precious mineral deposits.